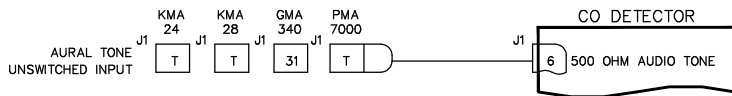


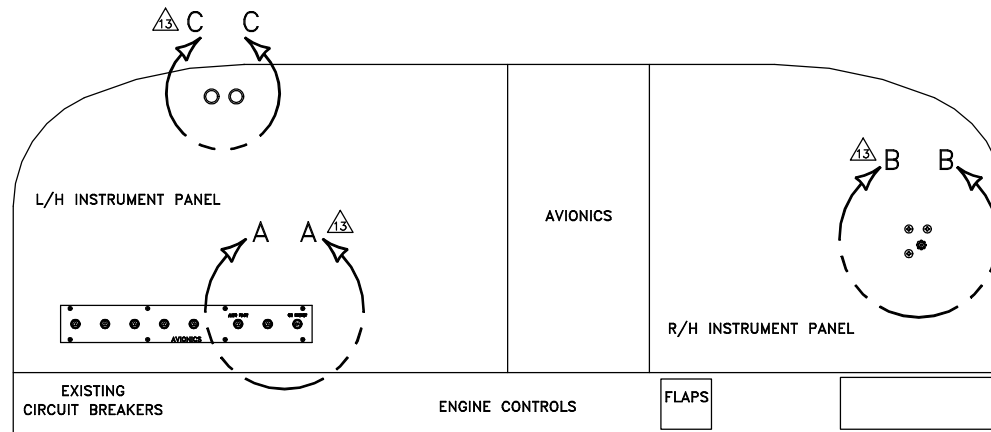
NOTES:

1. EXISTING EQUIPMENT.
2. PERMISSIBLE TO TRIM PARTS CREATED BY THIS DRAWING ON INSTALLATION AS REQUIRED.
3. TOUCH UP ALL BARE ALUMINUM SURFACES WITH ALODINE PER MIL-C-5541 CLASS 3.
4. PARENTHETICAL ENTITIES, (), ARE FOR REFERENCE ONLY.
5. LOCATE CIRCUIT BREAKER IN THE SAME GENERAL AREA WITH EXISTING CIRCUIT BREAKERS. LABEL AS SHOWN USING STANDARD ENGRAVING, SILKSCREEN, OR OTHER TECHNIQUES. LETTERING TO BE SAME HEIGHT AS EXISTING C/B LETTERING.
6. - - - - DENOTES EXISTING WIRES.
7. GROUND TWISTED-PAIR POWER RETURN WIRE NEAR CIRCUIT BREAKER PANEL. TWISTED-PAIR TO BE 6 TURNS PER FOOT OR GREATER.
8. TIE INTO EXISTING BUS BAR NEAR LOCATION OF NEW CIRCUIT BREAKER. IF A JUMPER WIRE IS REQUIRED, USE 20 GAUGE MIL-W-22759/XX TYPE.
9. BEST COMMERCIAL EQUIVALENT MAY BE SUBSTITUTED FOR THIS PART.
10. THE INSTALLATION OF WIRING TO BE PERFORMED IN ACCORDANCE WITH AC 43.13-1B, 2A, ACCEPTABLE METHODS, TECHNIQUES, AND PRACTICES - AIRCRAFT ALTERATIONS, CHAPTER 11. ALL WIRE TO BE MIL-W-22759/16 OR EQUIVALENT.
11. LETTERING TO BE .10 HIGH MINIMUM, WHITE, HELVETICA, LOCATED APPROX AS SHOWN. USE STANDARD SILKSCREENING, ENGRAVING OR PLACARD TECHNIQUES.
12. OPTIONAL MOUNTING SCREW / MOUNTING HOLE.
13. SEE OWNERS MANUAL 03-452-201 FOR INSTALLATION CRITERIA.
14. SEE MFG INSTALLATION MANUAL FOR RS-232 HOOKUPS (OPTIONAL).
15. THE FOLLOWING IS A GUIDE FOR UNSWITCHED AUDIO PINOUTS. PINOUTS MUST BE VERIFIED WITH LATEST MANUFACTURER DRAWINGS.



16. ACTIVATE VOICE SYNTHESIZED AUDIO PANELS ON PRODUCTS SUCH AS PS ENGINEERING MODEL PMA 7000B PIN 20.
17. NOT USED.
18. SPARE GROUND USED BY GARMIN 900 AND G1000. SEE GARMIN INSTALLATION MANUAL.
19. MFD CONTROLLED BY RS232 REMOTE TEST/RESET.
20. TEMP OUTPUT (0-5V) SEE MFG INSTALLATION MANUAL.
21. CO OUTPUT (0-5V) SEE MFG INSTALLATION MANUAL.
22. ITEMS ARE OPTIONAL IF MFG RS-232 HOOKUP IS USED FOR REMOTE RESET AND DISPLAY OF DATA.
23. CABIN PRESSURE (0-5V) SEE MANUFACTURERS INSTALLATION MANUAL.

REVISIONS			
REV	DESCRIPTION	DATE	APVD
A	ADDED FLAG NOTE 13 & 14. ADDED ITEMS 7 & 8 TO PARTS LIST. ADDED 9 PIN D-SUB INSTL. SHT 3.	10/26/04	ASH VJ
B	ADDED FLAG NOTE 16.	11/16/04	ASH VJ
C	CHANGES TO WIRING DIAGRAM	8/20/06	ASH VJ
D	NOTES & SHEETS 4 AND 5 ADDED.	1/14/08	C.R.M.
E	SHEETS 4 & 5 ADDED.	1/31/08	C.R.M.

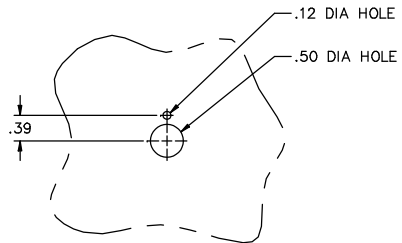


TYPICAL INSTRUMENT PANEL SHOWN
VIEW LOOKING FWD

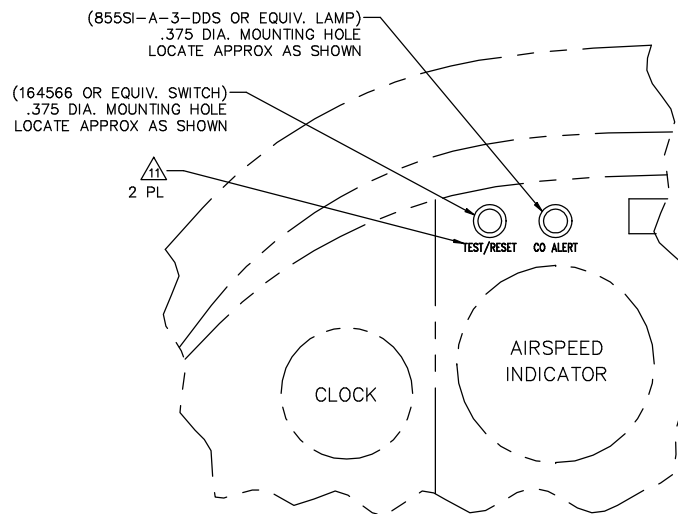
ITEM	QTY	PART NUMBER	DESCRIPTION	VENDOR
9	1	7277-2-1/2	CIRCUIT BREAKER	AMP
8	1	205204-1	9 PIN D-SUB	AMP
7	3	MS35214-44	SCREW	QPL
6	1	164566	MOMENTARY SWITCH	DIGI KEY
5	1	855SI-A-3-DDS	LAMP	SOLAN
4	1	7277-2-2	CIRCUIT BREAKER	KLIXON
3	1	205203-1	CONNECTOR	
2	1	205204-1	CONNECTOR	
1	1	452-201-***	REMOTE C O DETECTOR	C O GUARDIAN

PROPRIETARY NOTICE		RIVET CODES PER NAS203		APPROVALS		DATE		UNLESS OTHERWISE NOTED ALL DIM ARE IN INCHES	
This drawing contains specifications and/or data, technical material, proprietary designs and information that are the sole property of C O Guardian, LLC, and included by its recipient on a confidential basis, and is not to be shown or disclosed to any unauthorized organization or person.		BB = MS20428AD		DESIGN	A. E. S.	03/17/03		TOLERANCES	
		BJ = MS20470AD		DRAWN	ERIC WILSON	03/17/03		.XXX ±.010 ANGLES	
				CHECK	MIKE GORDON	03/17/03		.XX ±.03	
				INSP.				.X ±.1	
				PROJ.				FINISH	
		DASH		REL.	ASH VJ	03/17/03		NONE	
		NEXT ASSY						SCALE NONE	

TITLE		DRAWING NO.		SHEET	
REMOTE CO DETECTOR INSTL.		01-2510-02		1 OF 7	



SECTION D-D
(TYPICAL C/B INSTL)
C/B REMOVED FOR CLARITY



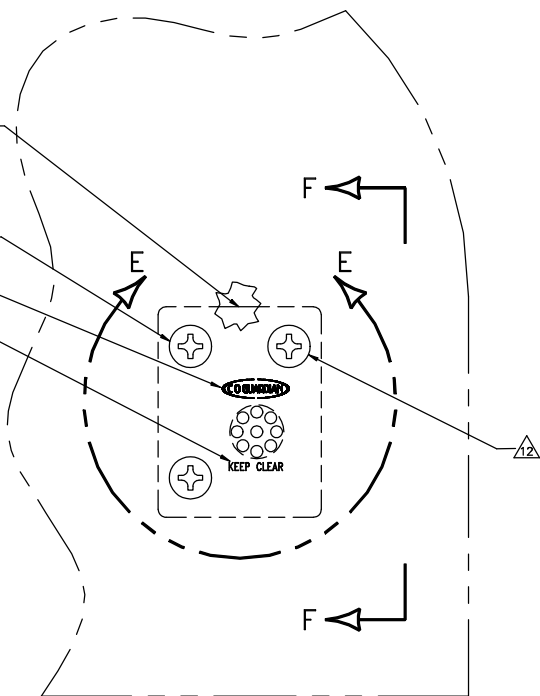
SECTION C-C

(452 REMOTE CO DETECTOR)
ALIGN VERTICALLY WITH ANY
EXISTING COMPONENTS,
LOCATE APPROX AS SHOWN.

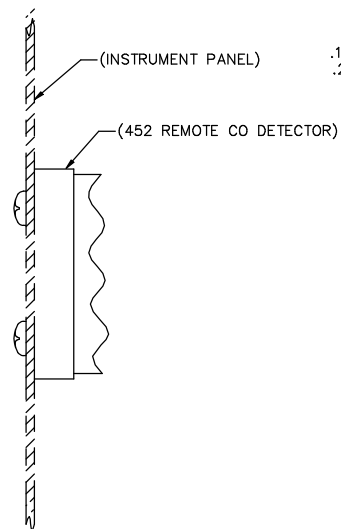
MS35214-44 SCREW
3 PL

11

11

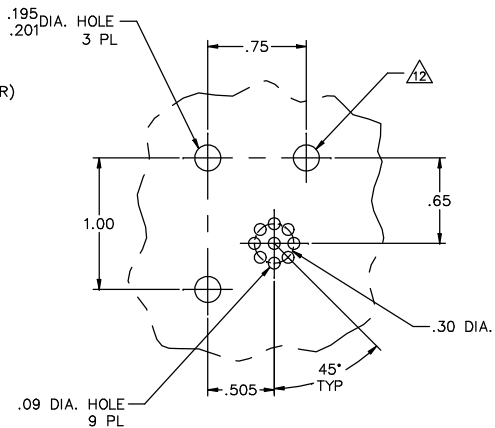


SECTION B-B

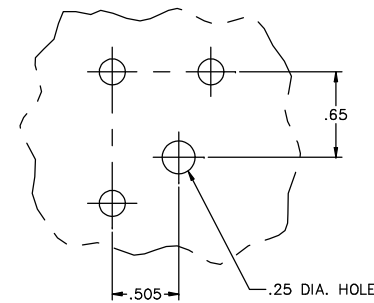


SECTION F-F

→ FWD

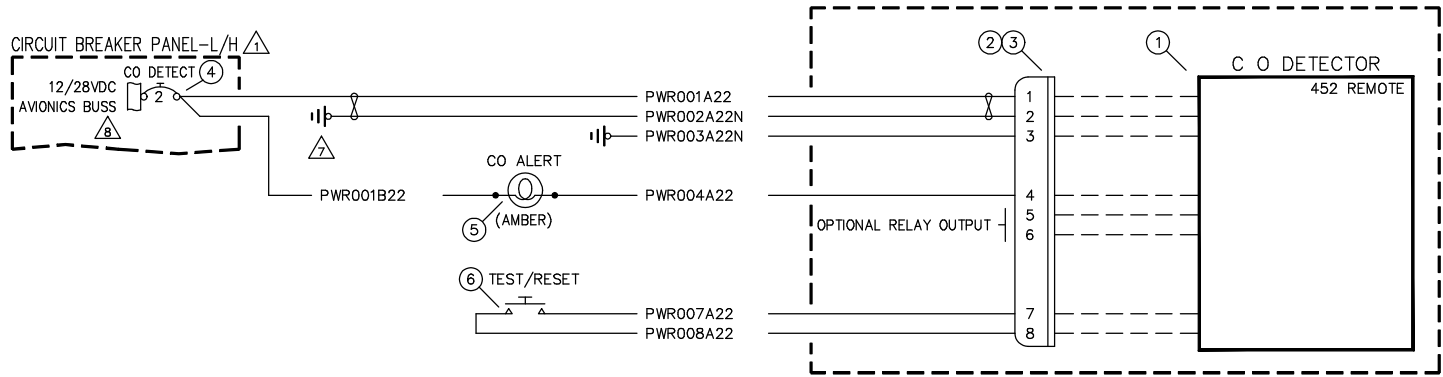


SECTION E-E
MOUNTING HARDWARE REMOVED FOR CLARITY

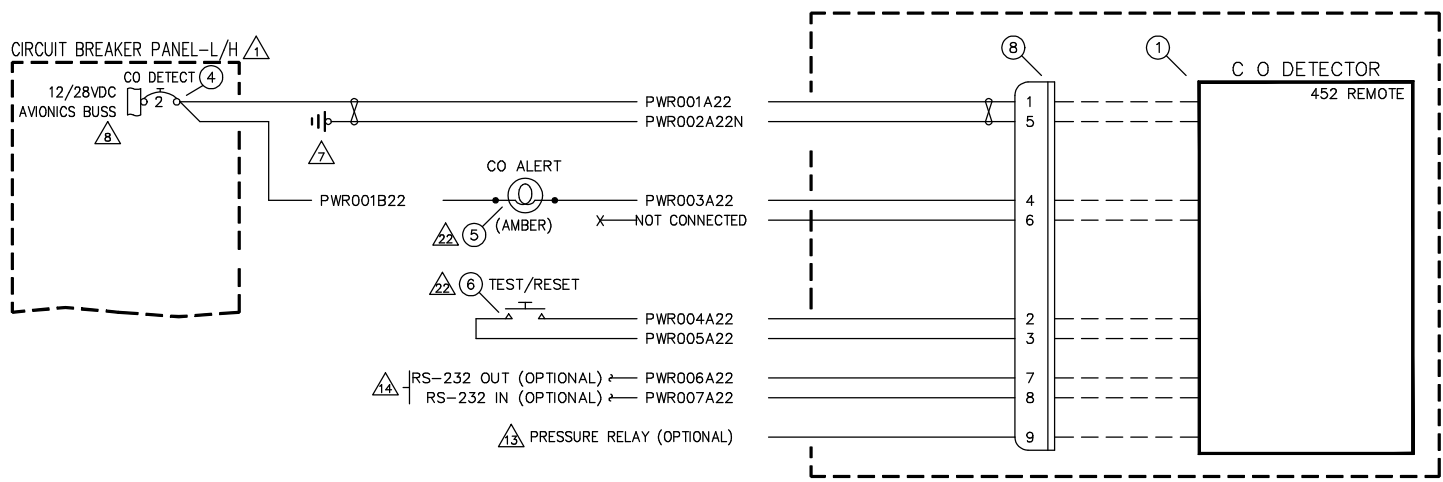


OPTIONAL HOLE PATTERN

CO GUARDIAN		1001 East Airport Drive Tucson, AZ 85706	
TITLE CO DETECTOR INSTL.			
DRAWING NO. 01-2510-02	Sht OF 7	2	REV 7 E

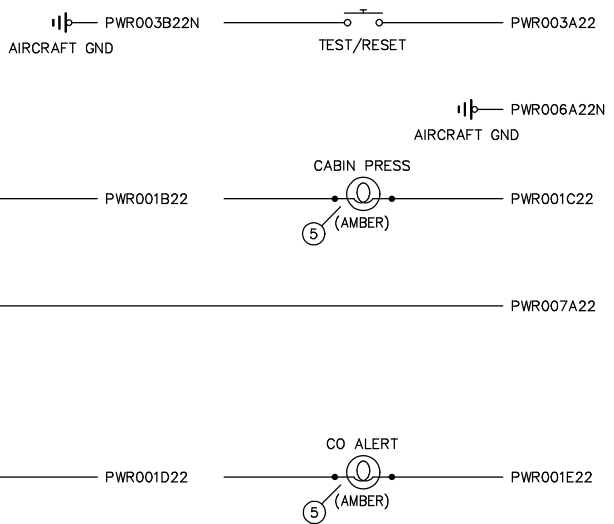
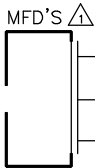
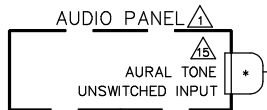
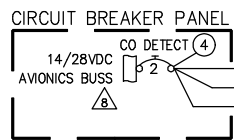


C O DETECTOR INSTALLATION WIRING DIAGRAM
452-201-001 THRU -004 INSTL

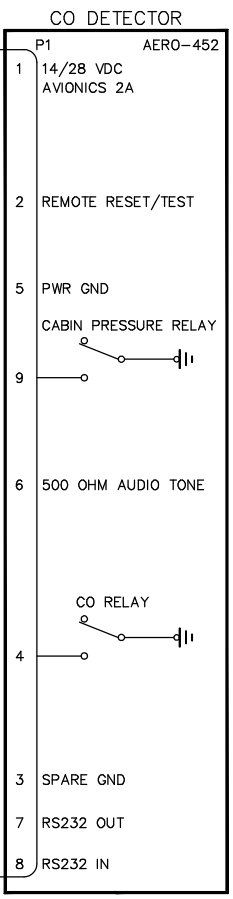


C O DETECTOR INSTALLATION WIRING DIAGRAM
452-201-005 THRU -009 INSTL

CO GUARDIAN		1001 East Airport Drive Tucson, AZ 85706	
TITLE CO DETECTOR INSTL.			
DRAWING NO.	REV	REV	REV
01-2510-02	3	7	E



①②③



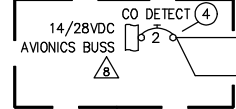
C O DETECTOR INSTALLATION WIRING DIAGRAM

452-201-010

CO GUARDIAN		1951 East Airport Drive Tucson, AZ 85706	
TITLE CO DETECTOR INSTL.			
DRAWING NO.	SH	REV	
01-2510-02	4 of 7	E	

FILENAME: 01-2510-02E

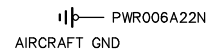
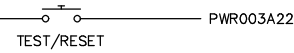
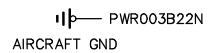
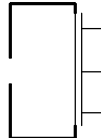
CIRCUIT BREAKER PANEL



AUDIO PANEL



MFD'S



PWR001D22



PWR001E22

PWR001A22

PWR010A22

PWR009A22

PWR001A22

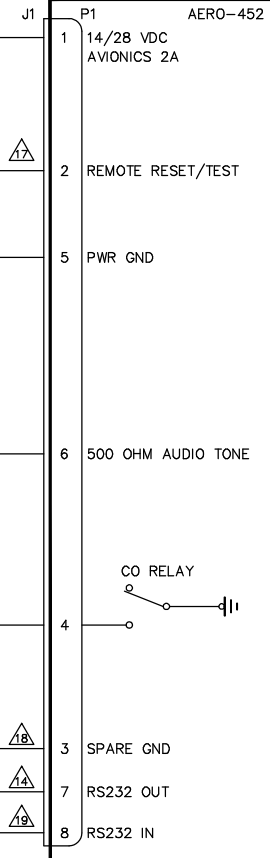
PWR003A22

PWR006A22N

PWR007A22

① ② ③

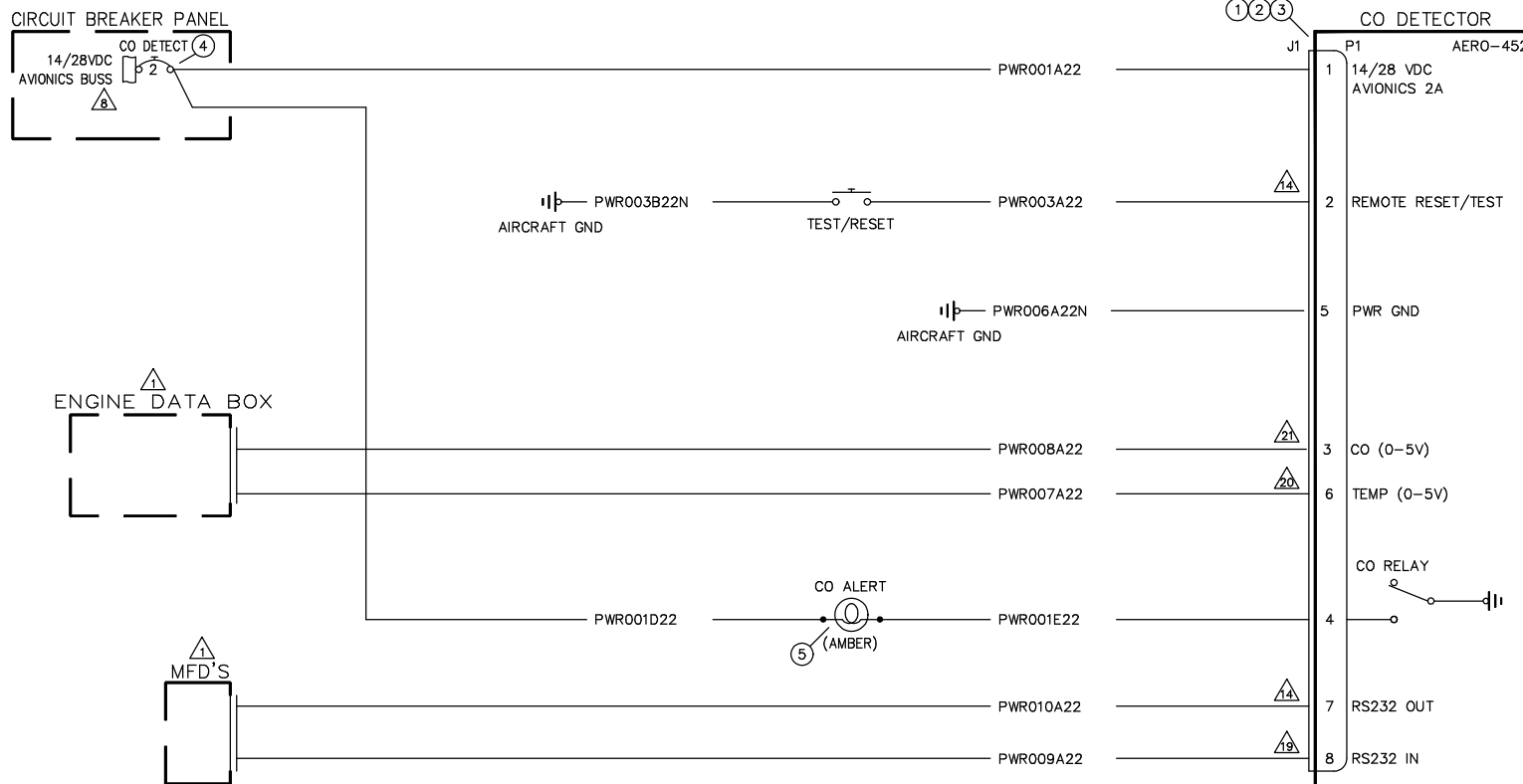
CO DETECTOR



C O DETECTOR INSTALLATION WIRING DIAGRAM

452-201-011

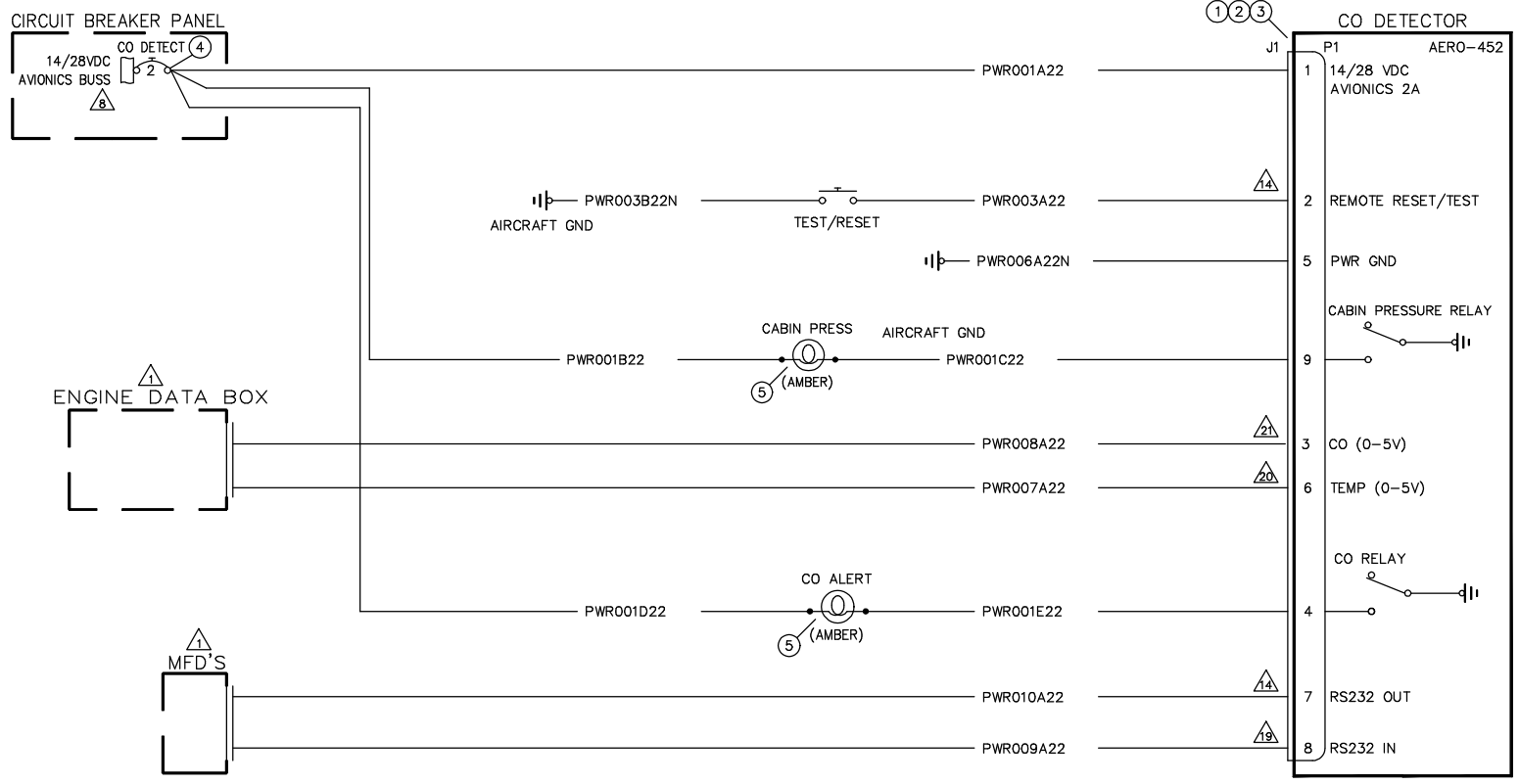
CO GUARDIAN		1951 East Airport Drive Tucson, AZ 85706	
TITLE CO DETECTOR INSTL.			
DRAWING NO.	REV	SH	REV
01-2510-02	E	5 of 7	E



C O DETECTOR INSTALLATION WIRING DIAGRAM

452-201-012

CO GUARDIAN		1951 East Airport Drive Tucson, AZ 85706	
TITLE CO DETECTOR INSTL.			
DRAWING NO.	REV	REV	REV
01-2510-02	6	7	E



C O DETECTOR INSTALLATION WIRING DIAGRAM

452-201-013

		1961 East Airport Drive Tucson, AZ 85706	
TITLE			
CO DETECTOR INSTL.			
DRAWING NO.	Sht	REV	
01-2510-02	7	7	E
	of		
	7		