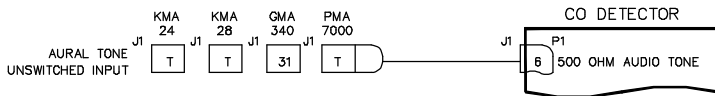


NOTES:

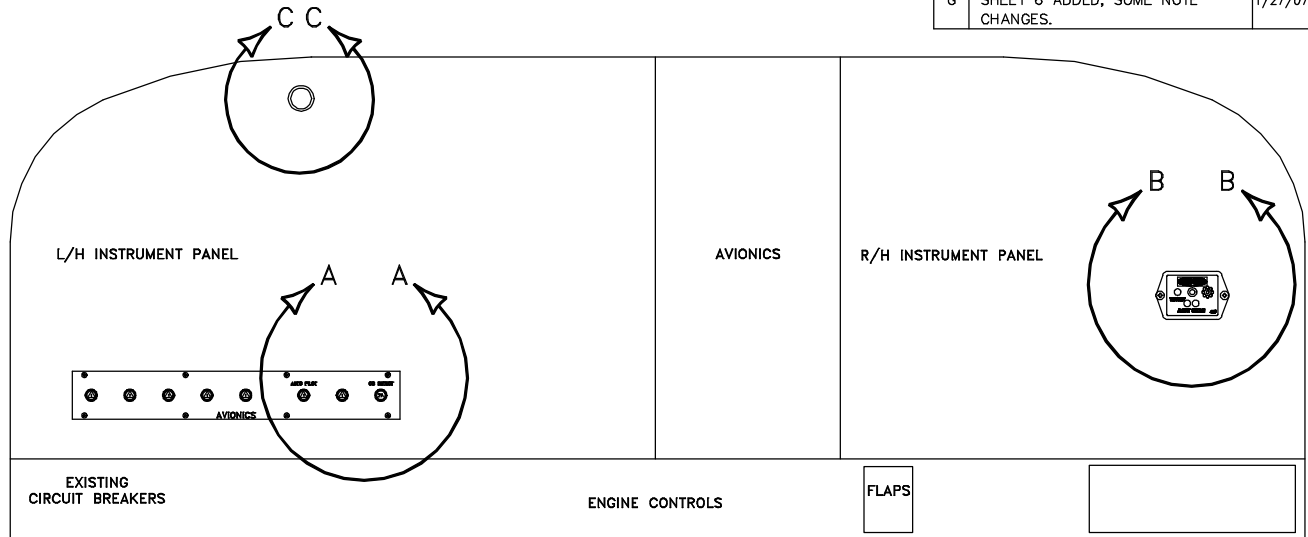
1. EXISTING EQUIPMENT.
2. PERMISSIBLE TO TRIM PARTS CREATED BY THIS DRAWING ON INSTALLATION AS REQUIRED.
3. TOUCH UP ALL BARE ALUMINUM SURFACES WITH ALODINE PER MIL-C-5541 CLASS 3.
4. PARENTHETICAL ENTITIES, (), ARE FOR REFERENCE ONLY.
5. LOCATE CIRCUIT BREAKER IN THE SAME GENERAL AREA WITH EXISTING CIRCUIT BREAKERS. LABEL AS SHOWN USING STANDARD ENGRAVING, SILKSCREEN, OR OTHER TECHNIQUES. LETTERING TO BE SAME HEIGHT AS EXISTING C/B LETTERING.
6. _____ DENOTES EXISTING WIRES.
7. ALL GROUNDS GO TO NEAREST GROUND POINT ON AIRCRAFT.
8. TIE INTO EXISTING BUS BAR NEAR LOCATION OF NEW CIRCUIT BREAKER. IF A JUMPER WIRE IS REQUIRED, USE 20 GAUGE MIL-W-22759/XX TYPE.
9. BEST COMMERCIAL EQUIVALENT MAY BE SUBSTITUTED FOR THIS PART.
10. THE INSTALLATION OF WIRING TO BE PERFORMED IN ACCORDANCE WITH AC 43.13-1B, 2A, ACCEPTABLE METHODS, TECHNIQUES, AND PRACTICES - AIRCRAFT ALTERATIONS, CHAPTER 11. ALL WIRE TO BE MIL-W-22759/16 OR EQUIVALENT.
11. LETTERING TO BE .10 HIGH MINIMUM, WHITE, HELVETICA, LOCATED APPROX AS SHOWN. USE STANDARD SILKSCREENING, ENGRAVING OR PLACARD TECHNIQUES.
12. OPTIONAL MOUNTING SCREW / MOUNTING HOLE.
13. SEE OWNERS MANUAL 01-2510-02 FOR INSTALLATION CRITERIA.
14. SEE MFG INSTALLATION MANUAL FOR RS-232 HOOKUPS (OPTIONAL).
15. THE FOLLOWING IS A GUIDE FOR UNSWITCHED AUDIO PINOUTS. PINOUTS MUST BE VERIFIED WITH LATEST MANUFACTURER DRAWINGS.



16. ACTIVATE VOICE SYNTHESIZED AUDIO PANELS ON PRODUCTS SUCH AS PS ENGINEERING MODEL PMA 7000B PIN 20.
17. OPTIONAL IF DETECTOR IS INSTALLED AWAY FROM THE PILOTS REACH OR INSTALLED IN A REMOTE APPLICATION.
18. SPARE GROUND USED BY GARMIN 900 AND G1000. SEE GARMIN INSTALLATION MANUAL.
19. MFD CONTROLLED BY RS232 REMOTE TEST/RESET.
20. TEMP OUTPUT (0-5V) SEE MFG INSTALLATION MANUAL.
21. CO OUTPUT (0-5V) SEE MFG INSTALLATION MANUAL.
22. ITEMS ARE OPTIONAL IF MFG RS-232 HOOKUP IS USED FOR REMOTE RESET AND DISPLAY OF DATA.
23. CABIN PRESSURE (0-5V) SEE MANUFACTURERS INSTALLATION MANUAL.

FILENAME: 01-2510-01G

REVISIONS			
REV	DESCRIPTION	DATE	APVD
A	MINOR DRAWING CHANGES.	08/02/02	J. W. G.
B	ADDED EXTERNAL CO ALARM LAMP.	10/22/02	J. W. G.
C	CHANGED P/N OF ITEM 1 IN PARTS LIST, SHT. 1. IS: 452, WAS: 452-101-004. MODIFIED NOMENCLATURE ON C O DETECTOR.	11/19/02	J. W. G.
D	VISUAL LAYOUT CHANGED, PIN OUT CHANGED	4/20/06	C.R.M.
E	INSTALL FOR TABS -009 THRU -010 ADDED.	5/17/06	C.R.M.
F	FLAG NOTES ADDED, SHEETS 4 AND 5 ADDED.	1/14/08	C.R.M.
G	SHEET 6 ADDED, SOME NOTE CHANGES.	1/27/07	C.R.M.

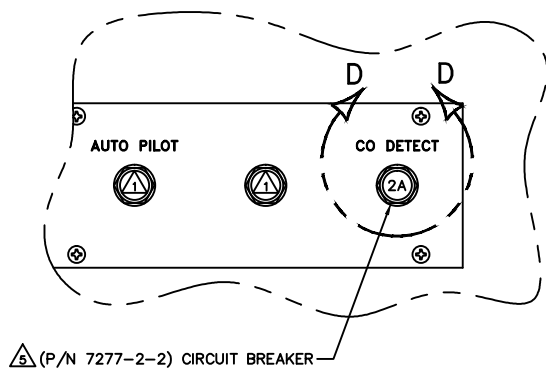


TYPICAL INSTRUMENT PANEL INSTALLATION

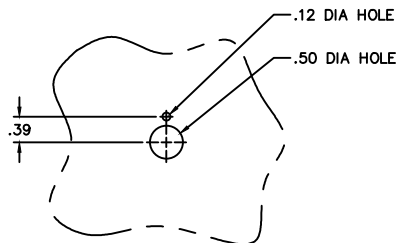
VIEW LOOKING FWD

5	1	855SI-A-3-DDS	LAMP	SOLAN
4	1	7277-2-2	CIRCUIT BREAKER	KLIXON
3	1	TBD	CONNECTOR	
2	1	TBD	CONNECTOR	
1	1	452	C O DETECTOR	C O GUARDIAN

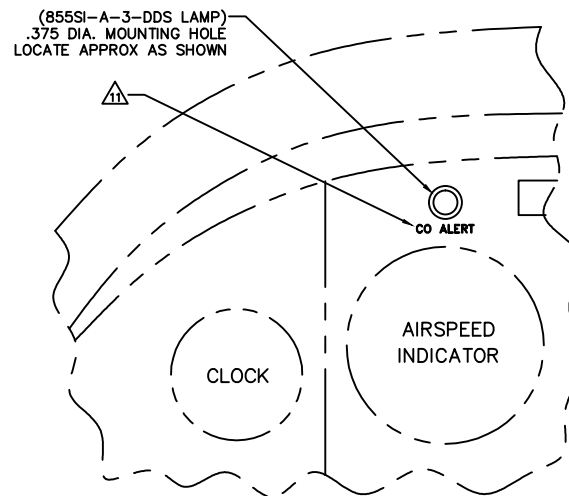
ITEM		QTY	PART NUMBER	DESCRIPTION	VENDOR
PROPRIETARY NOTICE		RIVET CODES PER NAS853 SB = MS20426AD BU = MS20470AD		APPROVALS	
<p>This drawing contains specifications and/or data, technical material, proprietary designs and information that are the sole property of C O Guardian, LLC and are used by its recipient on a confidential basis, and it not to be shown or disclosed to any unauthorized organization or person.</p> <p>UNLESS OTHERWISE NOTED: ALL DIM TO BE 3 X MATL THICKNESS</p>		DESIGN	A.E.S.	09/12/01	<p>UNLESS OTHERWISE NOTED ALL DIM ARE IN INCHES</p> <p>TOLERANCES .XX ±.010 ANGLES .XX ±.03 ±1/2° X ±.1</p> <p>FINISH NONE SCALE NONE</p>
		DRAWN	ERIC WILSON	09/12/01	
		CHECK	MIKE GORDON	09/12/01	
		INSP.			
		PROJ.			
		DASH	NEXT ASSY	REL.	ASH VIJ 09/12/01
		TITLE		DRAWING NO.	
		CO GUARDIAN		01-2510-01	
		1981 East Airport Drive Tucson, AZ 85708		SH 1 REV 4 G	



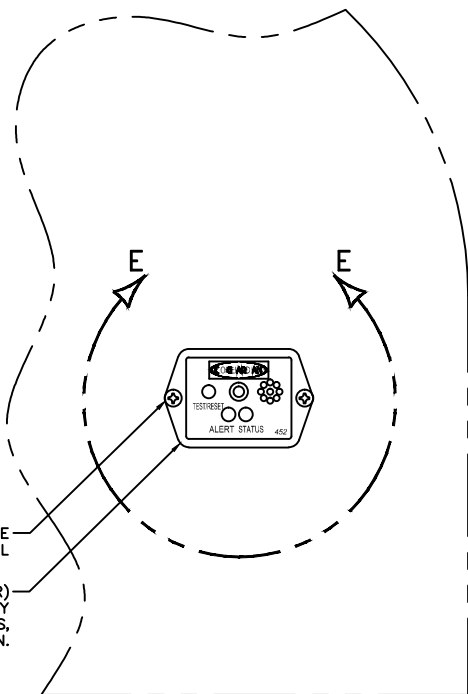
SECTION A-A



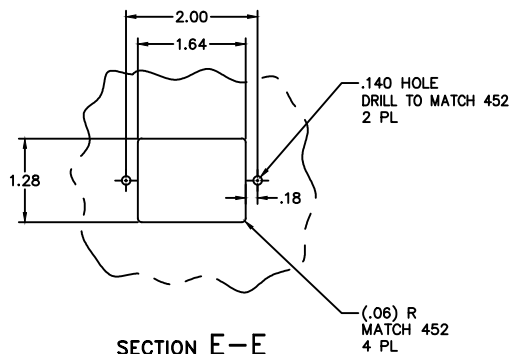
SECTION D-D
C/B REMOVED FOR CLARITY



SECTION C-C



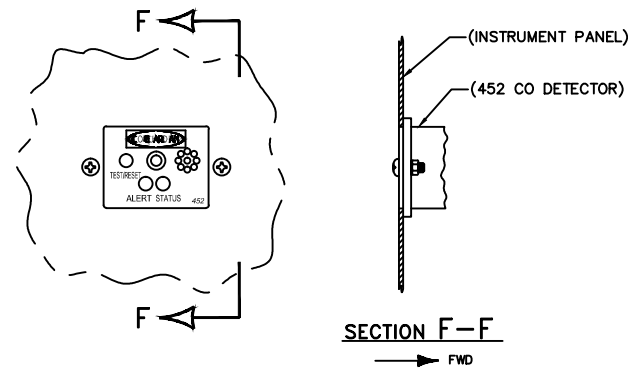
SECTION B-B



SECTION E-E
452 REMOVED FOR CLARITY

NOTE:

OPTIONAL FLUSH MOUNT INSTALLATION: MOUNT 452 CO DETECTOR BEHIND MOUNTING HOLE IN INSTRUMENT PANEL.



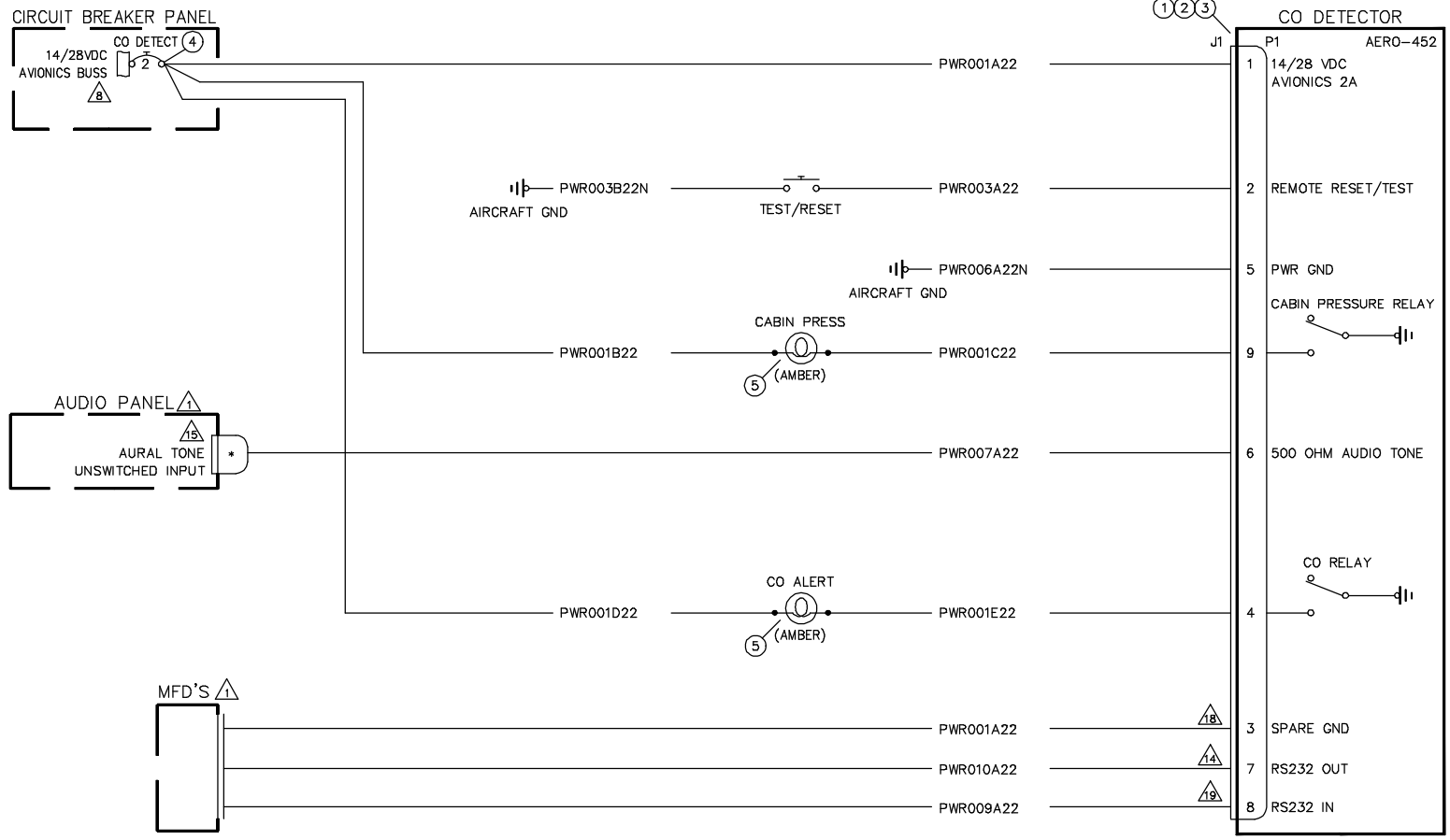
SECTION F-F

COGUARDIAN 1951 East Airport Drive
Tucson, AZ 85706

TITLE
CO DETECTOR INSTL.

DRAWING NO. 01-2510-01
FILENAME: 01-2510-01

SH 2
OF 4
REV 4
D

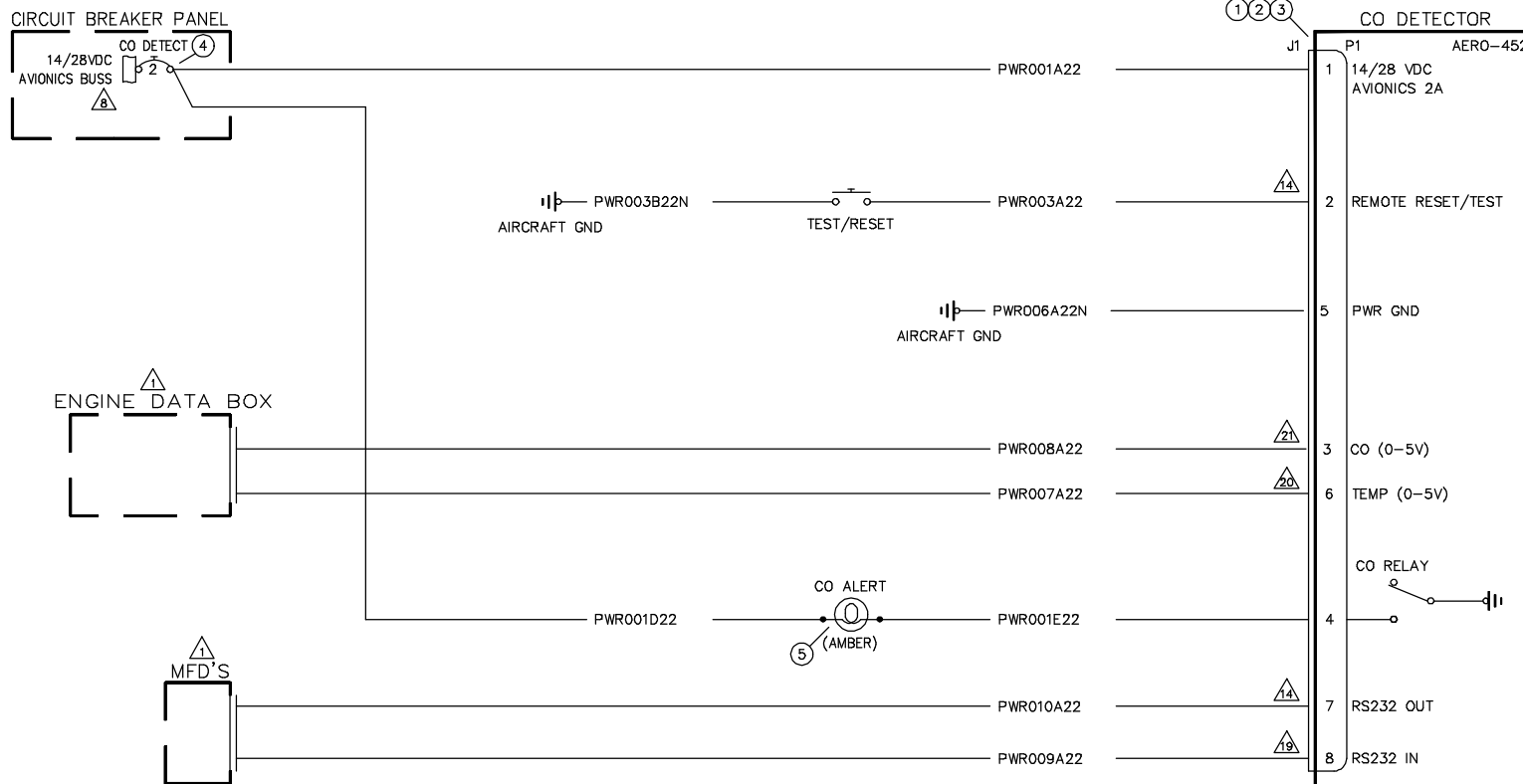


C O DETECTOR INSTALLATION WIRING DIAGRAM

452-201-010 & -011

		1991 East Airport Drive Tucson, AZ 85706	
TITLE CO DETECTOR INSTL.			
DRAWING NO. 01-2510-02	SET 3 OF 4	REV 4 E	

FILENAME: 01-2510-02E



C O DETECTOR INSTALLATION WIRING DIAGRAM

452-201-012 & -13

CO GUARDIAN		1991 East Airport Drive Tucson, AZ 85706	
TITLE CO DETECTOR INSTL.			
DRAWING NO.	REV	SH	OF
01-2510-02	E	4	4