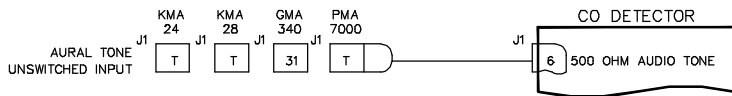


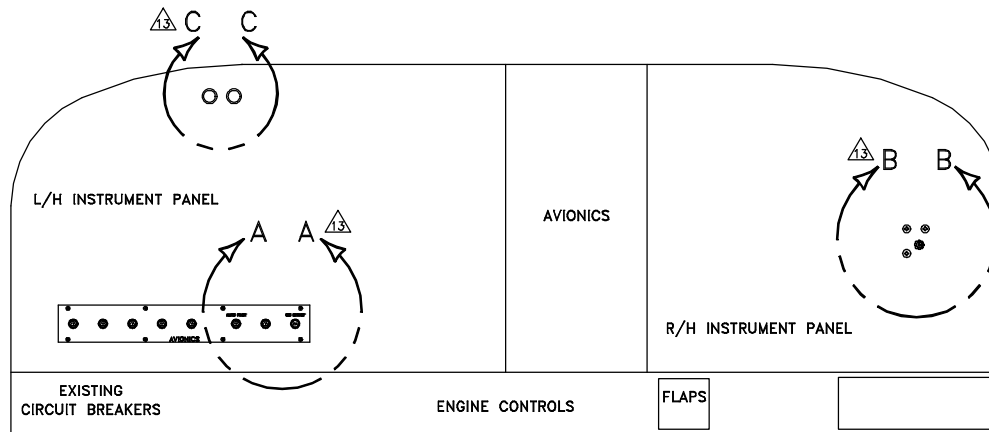
NOTES:

1. EXISTING EQUIPMENT.
2. PERMISSIBLE TO TRIM PARTS CREATED BY THIS DRAWING ON INSTALLATION AS REQUIRED.
3. TOUCH UP ALL BARE ALUMINUM SURFACES WITH ALODINE PER MIL-C-5541 CLASS 3.
4. PARENTHETICAL ENTITIES, (), ARE FOR REFERENCE ONLY.
5. LOCATE CIRCUIT BREAKER IN THE SAME GENERAL AREA WITH EXISTING CIRCUIT BREAKERS. LABEL AS SHOWN USING STANDARD ENGRAVING, SILKSCREEN, OR OTHER TECHNIQUES. LETTERING TO BE SAME HEIGHT AS EXISTING C/B LETTERING.
6. - - - - DENOTES EXISTING WIRES.
7. GROUND TWISTED-PAIR POWER RETURN WIRE NEAR CIRCUIT BREAKER PANEL. TWISTED-PAIR TO BE 6 TURNS PER FOOT OR GREATER.
8. TIE INTO EXISTING BUS BAR NEAR LOCATION OF NEW CIRCUIT BREAKER. IF A JUMPER WIRE IS REQUIRED, USE 20 GAUGE MIL-W-22759/XX TYPE.
9. BEST COMMERCIAL EQUIVALENT MAY BE SUBSTITUTED FOR THIS PART.
10. THE INSTALLATION OF WIRING TO BE PERFORMED IN ACCORDANCE WITH AC 43.13-1B, 2A, ACCEPTABLE METHODS, TECHNIQUES, AND PRACTICES - AIRCRAFT ALTERATIONS, CHAPTER 11. ALL WIRE TO BE MIL-W-22759/16 OR EQUIVALENT.
11. LETTERING TO BE .10 HIGH MINIMUM, WHITE, HELVETICA, LOCATED APPROX AS SHOWN. USE STANDARD SILKSCREENING, ENGRAVING OR PLACARD TECHNIQUES.
12. OPTIONAL MOUNTING SCREW / MOUNTING HOLE.
13. SEE OWNERS MANUAL 03-452-201 FOR INSTALLATION CRITERIA.
15. THE FOLLOWING IS A GUIDE FOR UNSWITCHED AUDIO PINOUTS. PINOUTS MUST BE VERIFIED WITH LATEST MANUFACTURER DRAWINGS.



16. ACTIVATE VOICE SYNTHESIZED AUDIO PANELS ON PRODUCTS SUCH AS PS ENGINEERING MODEL PMA 7000B PIN 20.
18. SPARE GROUND USED BY GARMIN 900 AND G1000. SEE GARMIN INSTALLATION MANUAL.
19. MFD CONTROLLED BY RS232 REMOTE TEST/RESET.
20. TEMP OUTPUT (0-5V) SEE MFG INSTALLATION MANUAL.
21. CO OUTPUT (0-5V) SEE MFG INSTALLATION MANUAL.
22. ITEMS ARE OPTIONAL IF MFG RS-232 HOOKUP IS USED FOR REMOTE RESET AND DISPLAY OF DATA.
23. CABIN PRESSURE (0-5V) SEE MANUFACTURERS INSTALLATION MANUAL.

REVISIONS			
REV	DESCRIPTION	DATE	APVD
A	ADDED FLAG NOTE 13 & 14. ADDED ITEMS 7 & 8 TO PARTS LIST. ADDED 9 PIN D-SUB INSTL, SHT 3.	10/26/04	ASH VJ
B	ADDED FLAG NOTE 16.	11/16/04	ASH VJ
C	CHANGES TO WIRING DIAGRAM	8/20/06	ASH VJ
D	NOTES & SHEETS 4 AND 5 ADDED.	1/14/08	C.R.M.
E	SHEETS 4 & 5 ADDED.	1/31/08	C.R.M.



TYPICAL INSTRUMENT PANEL SHOWN
VIEW LOOKING FWD

ITEM	QTY	PART NUMBER	DESCRIPTION	VENDOR
9	1	7277-2-1/2	CIRCUIT BREAKER	AMP
8	1	205204-1	9 PIN D-SUB	AMP
7	3	MS35214-44	SCREW	QPL
6	1	164566	MOMENTARY SWITCH	DIGI KEY
5	1	855SI-A-3-DDS	LAMP	SOLAN
4	1	7277-2-2	CIRCUIT BREAKER	KLIXON
3	1	205203-1	CONNECTOR	
2	1	205204-1	CONNECTOR	
1	1	452-201-***	REMOTE C O DETECTOR	C O GUARDIAN

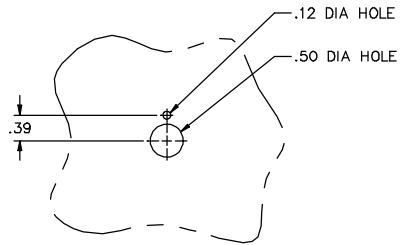
PROPRIETARY NOTICE		RIVET CODES		APPROVALS		DATE		UNLESS OTHERWISE NOTED		
This drawing contains specifications and/or data, technical material, proprietary designs and information that are the sole property of C O Guardian, LLC, and included by its resident on a confidential basis, and is not to be shown or disclosed to any unauthorized organization or person.		PER MS20428AD		DESIGN	A. E. S.	03/17/03		ALL DIM ARE IN INCHES		
		BU = MS20470AD		DRAWN	ERIC WILSON	03/17/03		TOLERANCES		
				CHECK	MIKE GORDON	03/17/03		XXX ±.010 ANGLES		
				UNLESS OTHERWISE NOTED: ALL BEND RAD TO BE 3 X MAIL THICKNESS	INSP.				.XX ±.03 ±1/2"	
					PROJ.				FINISH	
			DASH					NONE		
			NEXT ASSY					SCALE		
			REL.	ASH VJ		03/17/03		NONE		

C O GUARDIAN 1961 East Airport Drive
Tucson, AZ 85708

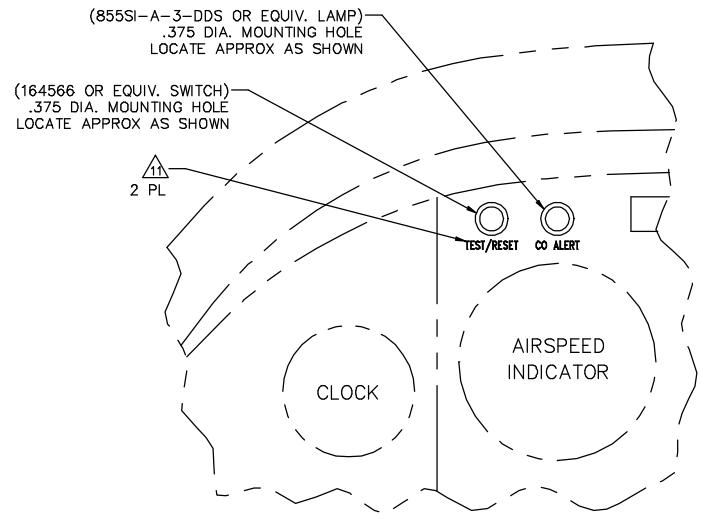
TITLE: REMOTE CO DETECTOR INSTL.

DRAWING NO. 01-2510-02

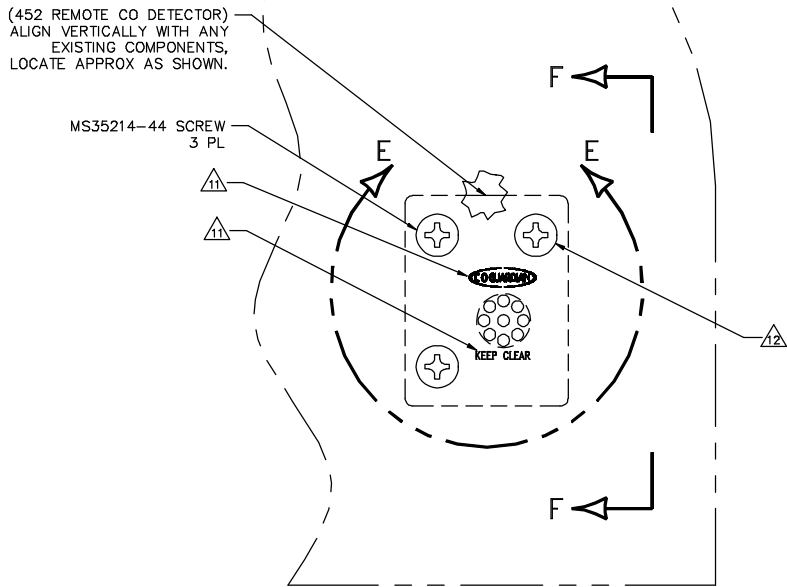
REV 1 OF 4



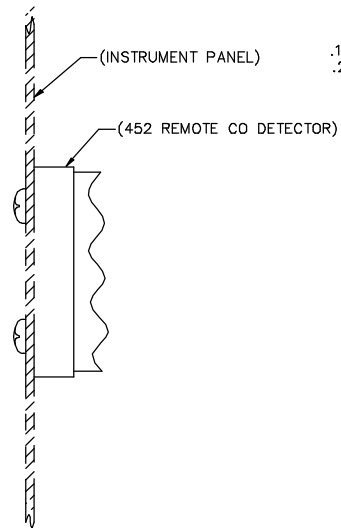
SECTION D-D
(TYPICAL C/B INSTL)
C/B REMOVED FOR CLARITY



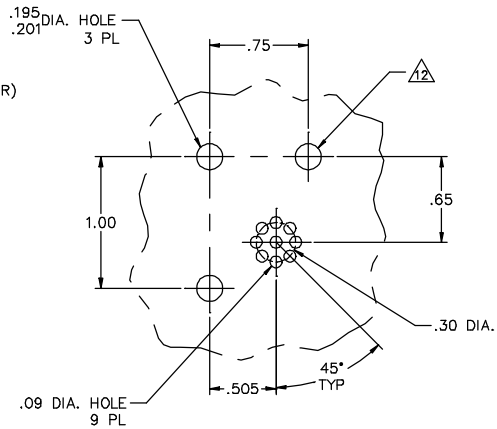
SECTION C-C



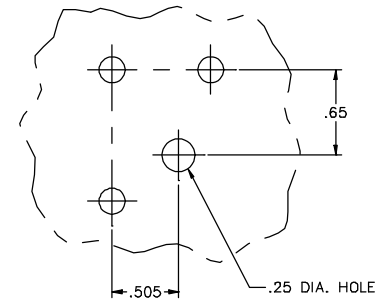
SECTION B-B



SECTION F-F
→ FWD

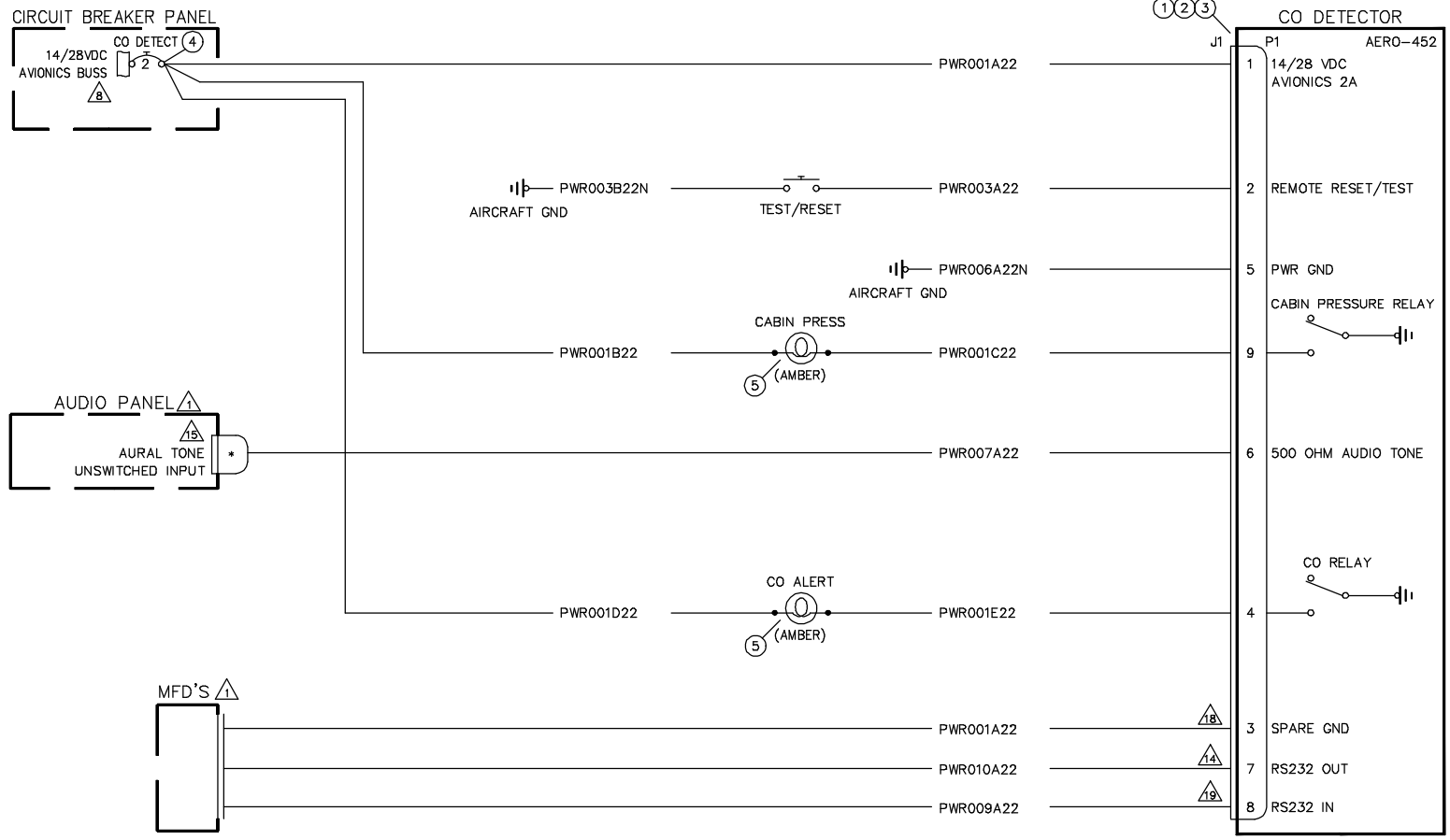


SECTION E-E
MOUNTING HARDWARE REMOVED FOR CLARITY



OPTIONAL HOLE PATTERN

CO GUARDIAN		1061 East Airport Drive Tucson, AZ 85706	
TITLE CO DETECTOR INSTL.			
DRAWING NO.	REV	Sht	REV
01-2510-02	E	2	4

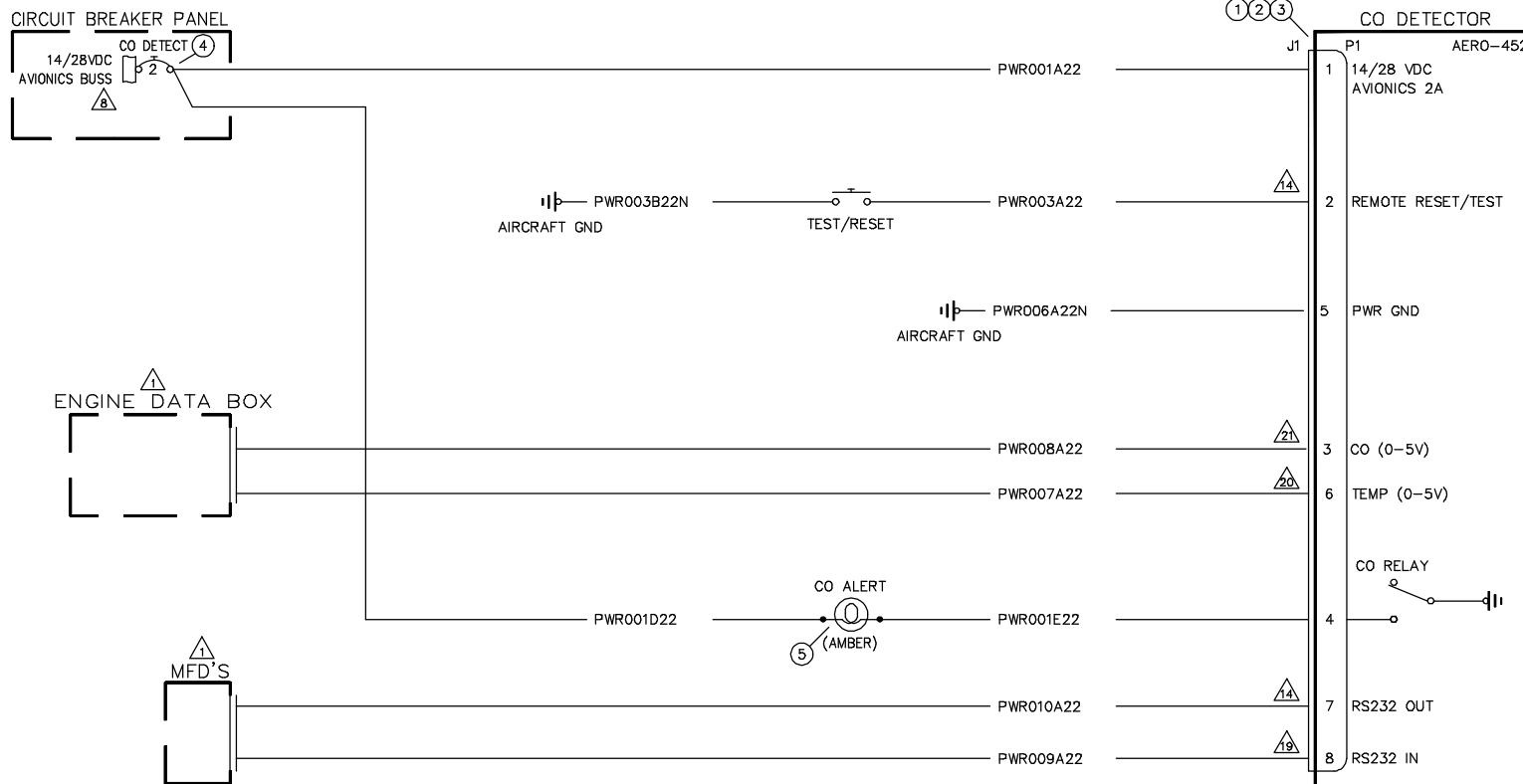


C O DETECTOR INSTALLATION WIRING DIAGRAM

452-201-010 & -011

CO GUARDIAN		1991 East Airport Drive Tucson, AZ 85706	
TITLE CO DETECTOR INSTL.			
DRAWING NO.	REV	REV	REV
01-2510-02	3	4	E
of		of	
4		4	

FILENAME: 01-2510-02E



C O DETECTOR INSTALLATION WIRING DIAGRAM

452-201-012 & -13

CO GUARDIAN		1991 East Airport Drive Tucson, AZ 85706	
TITLE CO DETECTOR INSTL.			
DRAWING NO.	REV	SH	OF
01-2510-02	E	4	4